

# SHOCKLOG<sup>®</sup> SATELLITE



## Product Description

The ShockLog<sup>®</sup> Satellite Impact Recording and Tracking System (formally ShockTrak) combines the powerful ShockLog<sup>®</sup> 298 Impact Recorder and a satellite module to deliver real-time reporting of unacceptable handling conditions and asset location. With the data report generated by SpotSee Cloud, you can gain valuable insights into your supply chain.



## Reduce Costs By Identifying Incidents Before Final Delivery Or Installation

With the ShockLog<sup>®</sup> Satellite Impact Recording and Tracking System, you can receive alerts of unacceptable conditions that your product has encountered. These conditions may affect the performance or safety of your product. Knowing what your product experienced on its journey allows you to act before a shipment is received or plan remediation before final installation of the asset in the field.

## Locate Valuable Assets 24/7 Via The SpotSee Cloud

During the journey, the ShockLog<sup>®</sup> Satellite utilizes a satellite network to alert you when a potentially damaging impact has occurred. With the web-hosted software, you can access the location information of your shipment. Built-in reporting tools allow you to see impacts over time as well as a histogram of the number of impacts in predetermined ranges.

## Industries Served

- Aerospace
- Arts and Media
- Chemicals
- Defense
- Electronics
- Energy and Utilities
- Engineering
- Food and Beverage
- Furniture and Fixtures
- Healthcare
- Logistics and Transport
- Order Fulfillment
- Pharmaceutical
- Retail
- Scientific Research and Instruments

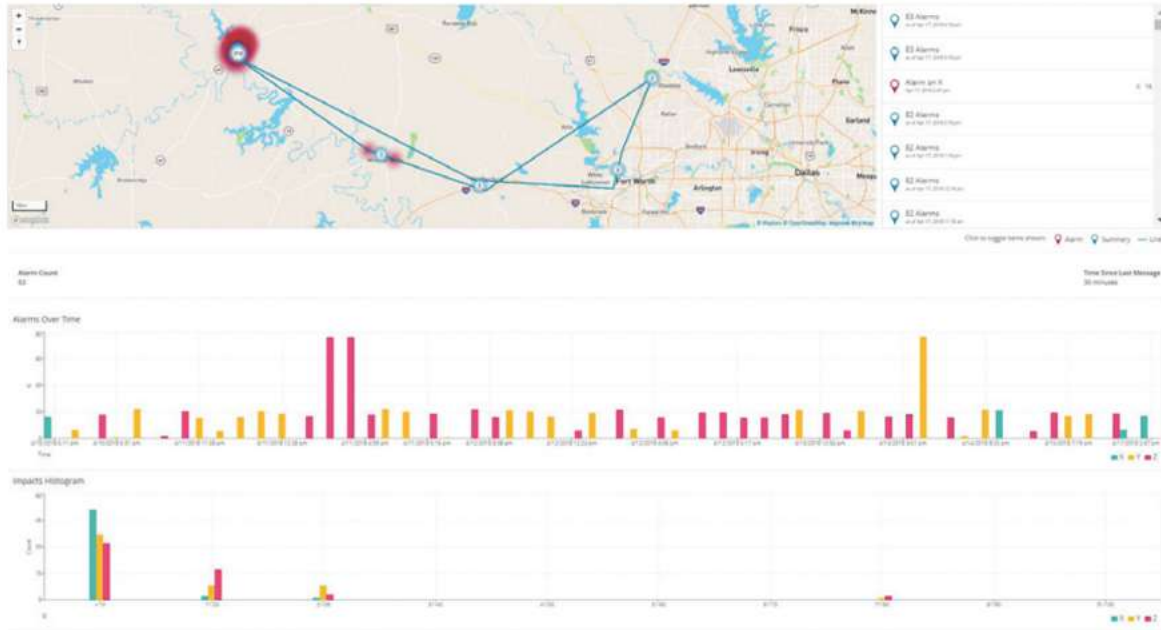


**STREAM PEAK INTERNATIONAL PTE LTD**  
Tel: +65 6610 7921 | Fax: +65 6862 2520  
Email: [enquiry@streampeak.com.sg](mailto:enquiry@streampeak.com.sg)

*Valuing Relationships, Protecting Goods*  
Address: 26 Tuas South Street 3, S(638026)  
Website: [www.streampeak.com.sg](http://www.streampeak.com.sg)

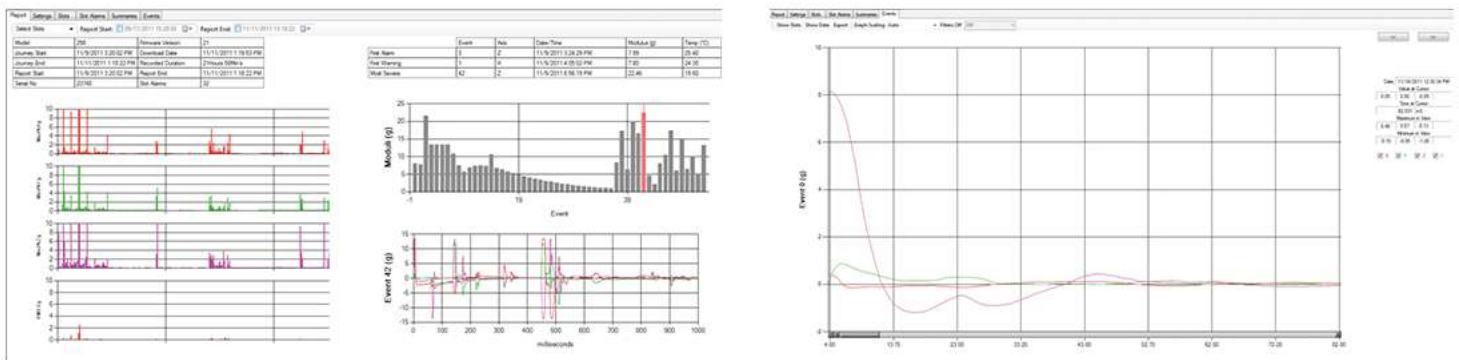
## Product Description

This versatile device is also preset with settings optimized for your assets; allowing users to customize impact recorder settings such as impact scale and frequency filters. Pre-programmed configuration allows the data logger to record 108 events with the highest sampling rate or 870 events at a lower sampling rate.



## Full Journey Analysis

When the journey has concluded, the ShockLog 298® desktop software allows you to download and analyze the full data set. The ShockLog Report View provides an overview of the entire journey, peak acceleration values for all three axes as well as detailed impact curves. Zoom in for a closer look at specific impacts or deport the data into programs such as Matlab for more detailed analysis.



## Key Features

- 24/7 access to your information around the globe
- Last known location of your assets
- Real-time reporting of unacceptable handling or environmental conditions
- Full journey profile and post-journey analytics
- Robust power source that provides up to 12 months of battery life
- Provides user configurable alarm conditions and messaging frequency
- Records impact events and internal temperature
- Sends real-time alert when unacceptable events occur
- Specifies location of unacceptable events
- Displays heat maps of trouble spots in the supply chain



## Product Applications

- Aerospace and Defense
- Auto and Truck Manufacturers
- Auto and Truck Parts
- Biotechnology and Drugs
- Chemicals/Petro-Chemicals
- Construction - Supplies and Fixtures
- Consumer Products
- Electronics
- Electronics - Computer Hardware
- Electronics - Telecommunications
- Energy and Utilities
- Food and Beverage
- Forestry and Wood Products
- Furniture and Fixtures
- Glass
- HVAC
- Industrial Equipment
- Logistics / Transport and Storage
- Manufacturing - Other
- Marine
- Media
- Medical Devices and Supplies
- Metal Fabrication
- Mining
- Musical Instruments/Equipment
- Packaging/Crating
- Photography
- Railroads
- Robotics
- Scientific and Technical Instruments / Research
- Water Treatment / Filtration

## Related Products



ShockLog® 298



ShockLog® Cellular



SpotBot Cellular



OpsWatch



STREAM PEAK INTERNATIONAL PTE LTD  
Tel: +65 6610 7921 | Fax: +65 6862 2520  
Email: [enquiry@streampeak.com.sg](mailto:enquiry@streampeak.com.sg)

Valuing Relationships, Protecting Goods  
Address: 26 Tuas South Street 3, S(638026)  
Website: [www.streampeak.com.sg](http://www.streampeak.com.sg)

## Product Specifications

Technical Specifications	
<b>Weight:</b>	9.7lbs / 4.4kg
<b>Size:</b>	12.61in x 9.42in x 4.69in
<b>Operating Temperature Range:</b>	- 86°F to 140°F / - 30°C to 60°C (The device will remain operational over the - 40°C to 85°C range, though it may experience battery life and RD signal degradation)
<b>Satellite Technology:</b>	Global LEO Satellite operation using Globalstar Simplex Data Networks
<b>Battery:</b>	2 x 3.6V AA Lithium (ShockLog) 4 x 1.5V AA Lithium (Satellite Module) 4 x 3.6V C-Sized Lithium (Optional Battery Pack)
<b>Battery Life:</b>	Up to 12 months
<b>Enclosure Rating:</b>	Nema 1, 3, 4X, 6P, 12
<b>Acceleration Range:</b>	± 1 to ± 200G
<b>Amplitude Scale:</b>	1G, 3G, 20G, 30G, 100G, 200G
<b>Scale Factor Accuracy at 5G:</b>	± 2%
<b>Additional Error Other Ranges:</b>	± 2%
<b>Cut-off Frequency Options (Programable):</b>	10Hz, 40Hz, 50Hz, 90Hz, 120Hz and 250Hz
<b>Wake Up Time:</b>	2.5ms
<b>Wake Up, Warning and Alarm Threshold (% of Range) :</b>	5% - 95%



## Related Products



Dunnage Bags



Container Desiccants



Impact Indicators



Humidity Indicators



**STREAM PEAK INTERNATIONAL PTE LTD**  
Tel: +65 6610 7921 | Fax: +65 6862 2520  
Email: enquiry@streampeak.com.sg

*Valuing Relationships, Protecting Goods*  
Address: 26 Tuas South Street 3, S(638026)  
Website: www.streampeak.com.sg