

# SHOCKWATCH® 2 IMPACT INDICATORS



## Product Description

ShockWatch 2 Impact Indicators alert everyone that your shipment should be handled with care and that it is being monitored for mishandling. Our impact indicators have been shown to reduce damage by 40-60%.

### Reduce costs without sacrificing quality.

Shipping docks are busy places with everyone rushing to get products shipped and received on time. With too much loading and unloading going on, it is not uncommon for products to get dropped and damaged. Carriers, manufacturers, and receivers are all impacted by damage-related costs. Often, the question becomes who is responsible for the damage and where did the damage happen?

### Damaged products benefit no one.

ShockWatch 2 indicators assist handlers in the supply chain by refining their processes so that mishandling may be prevented. They help assign accountability when mishandling occurs. The goal of the ShockWatch program is to reduce damage related incidents and ultimately drive down costs. ShockWatch 2 impact indicators indicate when products have been exposed to a potentially damaging impact during transit or in storage.

ShockWatch devices are tamperproof, field-armable, mechanically-activated devices that turn bright red when an impact occurs. Their presence on shipments deters mishandling and results in reduced damage related costs.

## Industries Served

- Aerospace & Defense
- Electronics
- Food
- Furniture
- Healthcare
- Inventory
- Logistics
- Supply Chain
- Warehousing



STREAM PEAK INTERNATIONAL PTE LTD  
Tel: +65 6610 7921 | Fax: +65 6862 2520  
Email: [enquiry@streampeak.com.sg](mailto:enquiry@streampeak.com.sg)

*Valuing Relationships, Protecting Goods*  
Address: 26 Tuas South Street 3, S(638026)  
Website: [www.streampeak.com.sg](http://www.streampeak.com.sg)

## Benefits

- Acts as a visual deterrent to improper handling
- Reduces mishandling through awareness
- Provides indisputable evidence of mishandling
- Promotes chain of accountability for all product handling
- Confirms effectiveness of packaging
- Helps identify trouble spots in supply chain, from production to transportation and storage
- Helps increase quality of product from dock to dock



*Not Activated*



*Activated*

## Product Specifications

Technical Specifications	
Sensitivity Range:	5-75 G
Impact Duration:	0.5 - 50 ms
Tolerance:	± 15% at 20°C / 68°F, 1 ATM
Operating Temperature:	-25° to 80°C / -13° to 176°F
Weight (varies by sensitivity):	~5.05 g
Dimensions:	42.93 mm x 42.93 mm x 6.35 mm / 1.69in x 1.69in x 0.25in
Security:	Tamperproof , Serialized
Adhesive:	Acrylic
Product Life:	2 years when stored at 20°C/68° F, 1 ATM
Storage Recommendations:	20°C/68° F, 1 ATM, 0-99% RH Non-condensing



**STREAM PEAK INTERNATIONAL PTE LTD**  
 Tel: +65 6610 7921 | Fax: +65 6862 2520  
 Email: [enquiry@streampeak.com.sg](mailto:enquiry@streampeak.com.sg)

*Valuing Relationships, Protecting Goods*  
 Address: 26 Tuas South Street 3, S(638026)  
 Website: [www.streampeak.com.sg](http://www.streampeak.com.sg)

## Selection Guide

Selecting the right indicator is a simple process. Start with your shipment size and weight. The selection guide provides a starting point for sensitivity selection. The indicator best suited to your application will also take into account product fragility and packaging. More fragile products may require a more sensitive (lower G) indicator while products with more robust packaging may need a less sensitive (higher G) indicator.

ShockWatch 2	5 - 15 ft <sup>3</sup> .14 - .42 m <sup>3</sup>	15 - 50 ft <sup>3</sup> .42 - 1.42 m <sup>3</sup>	50 - 100 ft <sup>3</sup> 1.42 - 2.83 m <sup>3</sup>	100 - 250 ft <sup>3</sup> 2.83 - 7.08 m <sup>3</sup>	250 - 500 ft <sup>3</sup> 7.08 - 14.16 m <sup>3</sup>	500 - 1,000 ft <sup>3</sup> 14.16 - 304.8 m <sup>3</sup>	1,000+ ft <sup>3</sup> 304.8+ m <sup>3</sup>
0 - 10 lbs 0 - 5 kg	75G	75G	50G	37G	N/A	N/A	N/A
10 - 25 lbs 5 - 11 kg	75G	50G	50G	37G	25G	N/A	N/A
25 - 50 lbs 11 - 23 kg	50G	50G	37G	25G	25G	15G	N/A
50 - 100 lbs 23 - 45 kg	50G	37G	37G	25G	15G	15G	10G
100 - 250 lbs 45 - 113 kg	37G	37G	25G	25G	15G	15G	10G
250 - 1,000 lbs 113 - 454 kg	37G	25G	25G	15G	15G	10G	10G
1,000 - 2,000 lbs 454 - 907 kg	25G	25G	25G	15G	15G	10G	5G
2,000 - 5,000 lbs 907 - 2,268 kg	25G	25G	15G	15G	10G	10G	5G
5,000 - 10,000 lbs 2,268 - 4,536 kg	25G	15G	15G	15G	10G	10G	5G
10,000 - 15,000 lbs 4,536 - 6,804 kg	N/A	15G	15G	10G	10G	5G	5G
15,000 - 20,000 lbs 6,804 - 9,072 kg	N/A	N/A	10G	10G	5G	5G	5G
20,000 - 30,000 lbs 9,072 - 13,608 kg	N/A	N/A	N/A	5G	5G	5G	5G
30,000+ lbs 13,608+ kg	N/A	N/A	N/A	N/A	5G	5G	5G

## Product Application

- Energy and Utilities
- Furniture and Fixtures
- Auto and Truck Parts
- Metal Fabrication
- Consumer Electronics
- Telecommunications Equipment
- Network Equipment
- IT Hardware
- High Tech Equipment
- Instrument Panels
- Logistics & Transport
- Packaging/Crating
- Medical Supplies & Devices
- Aerospace Components
- High Tech Equipment
- Defense Components
- Small Distribution Transformers
- HVAC

## Related Products



Alert Tape



ShockDot



Void Fillers



ShockLog@ 248



STREAM PEAK INTERNATIONAL PTE LTD  
Tel: +65 6610 7921 | Fax: +65 6862 2520  
Email: enquiry@streampeak.com.sg

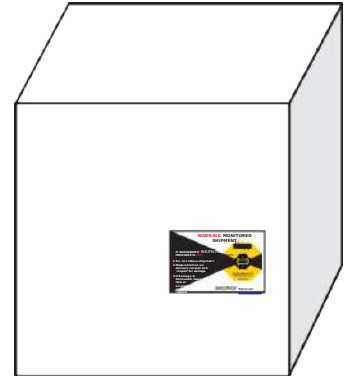
Valuing Relationships, Protecting Goods  
Address: 26 Tuas South Street 3, S(638026)  
Website: www.streampeak.com.sg



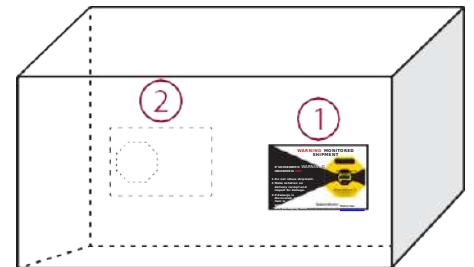


# ShockWatch<sup>®</sup> 2 Mounting Instructions

1. Mount the ShockWatch 2 Impact Indicator in the lower third of the package/pallet as close to the edge as possible. Avoid the center of the package because the mounting locations should be structurally sound.



2. If the package is twice as long as it is wide, use two ShockWatch 2 indicators. Place a second indicator in the same position on the opposite side of the package.



3. Place the Alert Sticker on your bill of lading as a reminder to receivers to check the ShockWatch 2 indicator immediately upon arrival.
4. While these instructions are considered best practices, each situation may be different. If you have any questions or would like to reorder, please contact your Stream Peak Sales Person or call our office at (+65) 6610 7921 or email to [enquiry@streampeak.com.sg](mailto:enquiry@streampeak.com.sg)
5. To reorder, do contact your Stream Peak Sales Person or call our office at (+65) 6610 7921 or email to [enquiry@streampeak.com.sg](mailto:enquiry@streampeak.com.sg)